



KABA®

Product Facts

Kerberos TPB Tripod Barriers

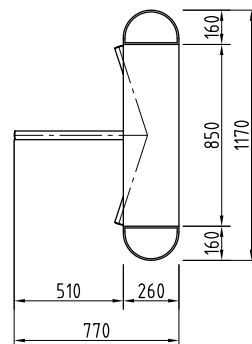
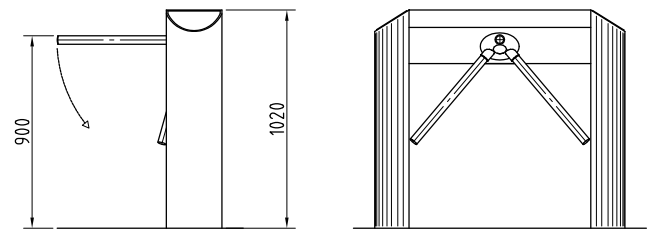
Regulation of single-file access within sight of reception staff
or automatic access control in connection with card readers.

Basic Equipment

TPB-E02



Construction	description	housing and base columns mounted as a single unit (no back plate between base columns)
	material housing	stainless steel AISI 304
	material base columns, ground plate or flange	stainless steel AISI 304
	material crossbars	types 0, 1.1 and 1.2 aluminium, type 2 stainless steel AISI 304
Finish		stainless steel satin finish
Function		type 0 * type 1.1 ** type 1.2 *** type 2 ****
Electrical Components		control system integrated in the unit power supply 110-230 VAC 50/60 Hz standby power consumption 10 VA
Installation		dowelled on finished floor level FFL suitable for outdoor installation (glossy finish recommended)
Protection class		housing IP 33, components conducting supply voltage IP 43

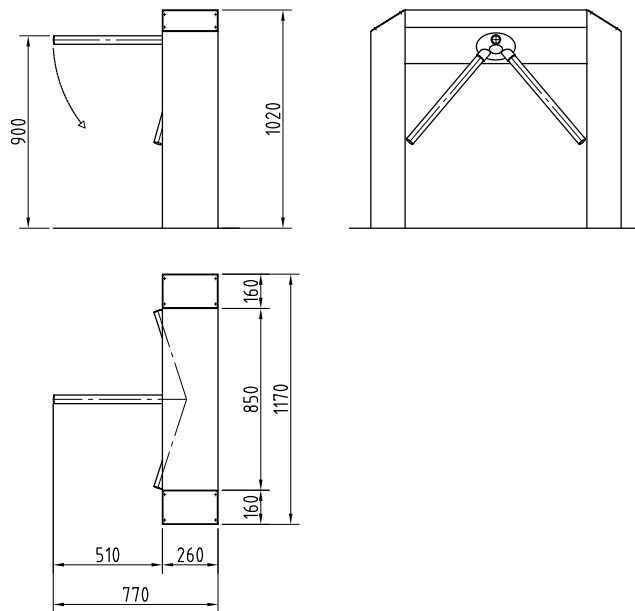


- * type 0 manual motion; mechanically free in one direction/
opposite direction blocked
- ** type 1.1 manual motion; 1 direction electrically controlled/
opposite direction locked (both directions currentless closed)
- *** Type 1.2 manual motion; 2 directions electrically controlled
(both directions currentless closed)
- **** type 2 power assisted motion; servo-positioning drive/
2 directions electrically controlled

Option



TPB-EQ2 with option "angular base columns"

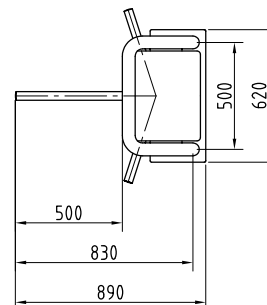
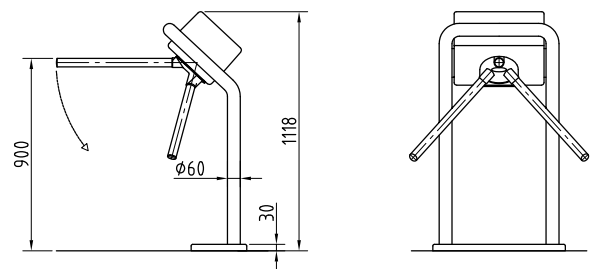


Basic Equipment

TPB-S01



Construction	description	housing with base column and base plate
	material housing	aluminium casting
	material base columns, ground plate or flange	stainless steel AISI 304
	material crossbars	stainless steel AISI 304
Finish		stainless steel satin finish, housing lacquered according to RAL
Function		type 2 ****
Electrical Components		control system integrated in the unit power supply 110-230 VAC 50/60 Hz standby power consumption 10 VA
Installation		dowelled on finished floor level FFL suitable for outdoor installation (glossy finish recommended)
Protection class		housing IP 33, components conducting supply voltage IP 43

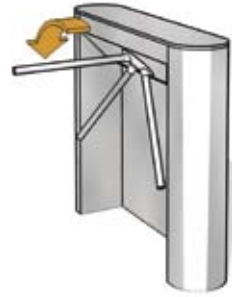


- * type 0 manual motion; mechanically free in one direction/
opposite direction blocked
- ** type 1.1 manual motion; 1 direction electrically controlled/
opposite direction locked (both directions currentless closed)
- *** Type 1.2 manual motion; 2 directions electrically controlled
(both directions currentless closed)
- **** type 2 power assisted motion; servo-positioning drive/
2 directions electrically controlled

TPB-S03



TPB-C01

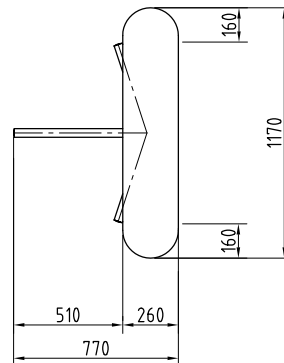
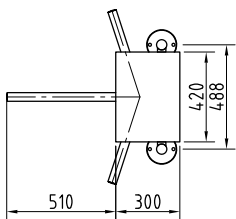
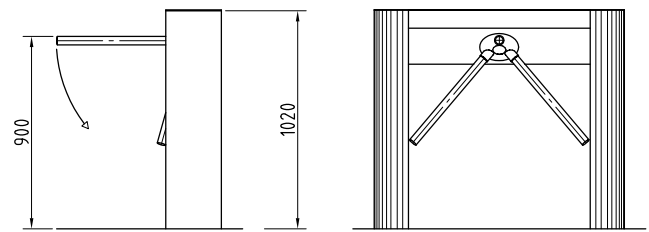
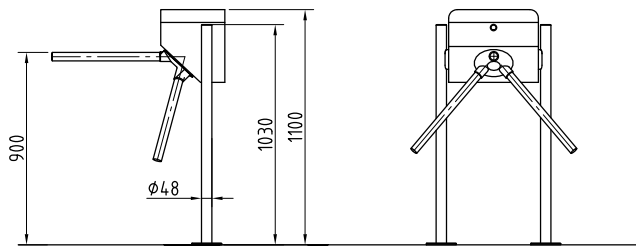


housing with base columns and flange

- aluminium
- stainless steel AISI 304
- stainless steel AISI 304
- stainless steel satin finish, aluminium lacquered according to RAL
- type 2 ****
- control system integrated in the unit
- power supply 110-230 VAC 50/60 Hz
- standby power consumption 10 VA
- dowelled on finished floor level FFL
- suitable for outdoor installation
(glossy finish recommended)
- housing IP 33, components conducting supply voltage IP 43

housing and base columns enclosed with additional stainless steel back plate between base columns

- stainless steel AISI 304
- stainless steel AISI 304
- stainless steel AISI 304
- stainless steel satin finish
- type 2 ****
- control system integrated in the unit
- power supply 110-230 VAC 50/60 Hz
- standby power consumption 10 VA
- dowelled on finished floor level FFL
- not suitable for outdoor installation

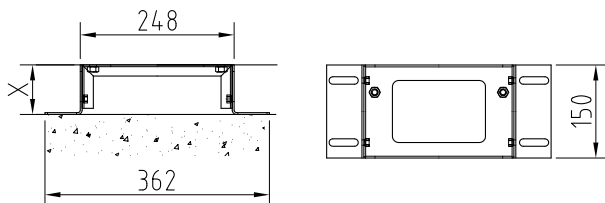


Options depending on unit type and motor assembly

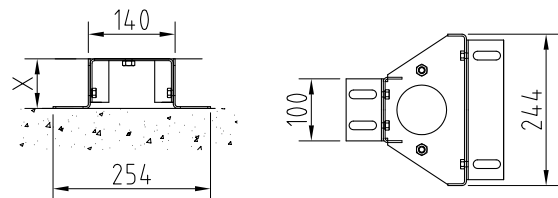
	TPB-E02	TPB-S01	TPB-S03	TPB-C01
Construction				
• collapsible bars with type 1,1, 1,2 and 2 motor assemblies, automatic reset for type 2 units	•	•	•	•
• protection against creeping underneath or surpassing	•			•
• cover plate in wood or plastic, housing made of stainless steel AISI 316				•
• angular base columns in stainless steel satin finish	•			
Finish				
• glossy instead of stainless steel satin finish	•	•	•	•
• housing made of stainless steel AISI 304 satin finish, instead of aluminium		•	•	
Function				
• counter, random generator with or without horn	•	•	•	•
• emergency module with emergency push-button, additional emergency push-button available	•	•	•	•
Electrical Components				
• installation preparation for components provided by customer on flat surface	•			•
or on base column		•	•	
• push button mounted on flat surface or	•		•	•
in stainless steel console for manual single release		•	•	
• operating panels and frames or housings for surface installation	•	•	•	•
• additional I/O boards to expand existing inputs and outputs with motor assembly type 2	•	•	•	•
• diverse signal devices	•	•	•	•
• end wiring distributor (connection of max. four OPLs possible)	•	•	•	•
• power supply plug to supply external knots, 24 VDC/1A, for connected units	•	•	•	•
Installation				
• palette with stainless steel ramp and rubber covering, appr. 1,0 x 1,5 m, height 32 mm	•	•	•	•
• on subconstruction X = 80 - 160 mm for structural floor level	•			•
• with clamping sleeves on mounting plate X = 80 - 180 mm for structural floor level		•	•	
• with cast in clamping sleeves and rosettes for structural floor level		•	•	

Installation alternatives

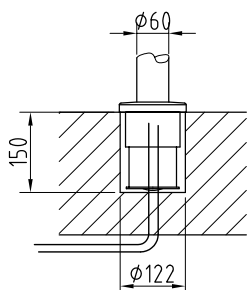
base frame TPB-E02 with option "angular base columns"



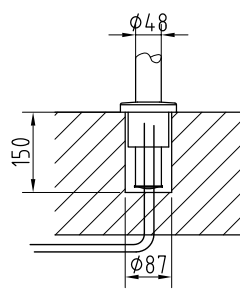
base frame TPB-E02/C01



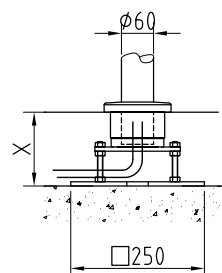
cast-in TPB-S01



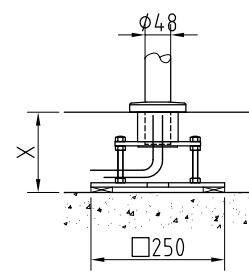
cast-in TPB-S03



base frame TPB-S01

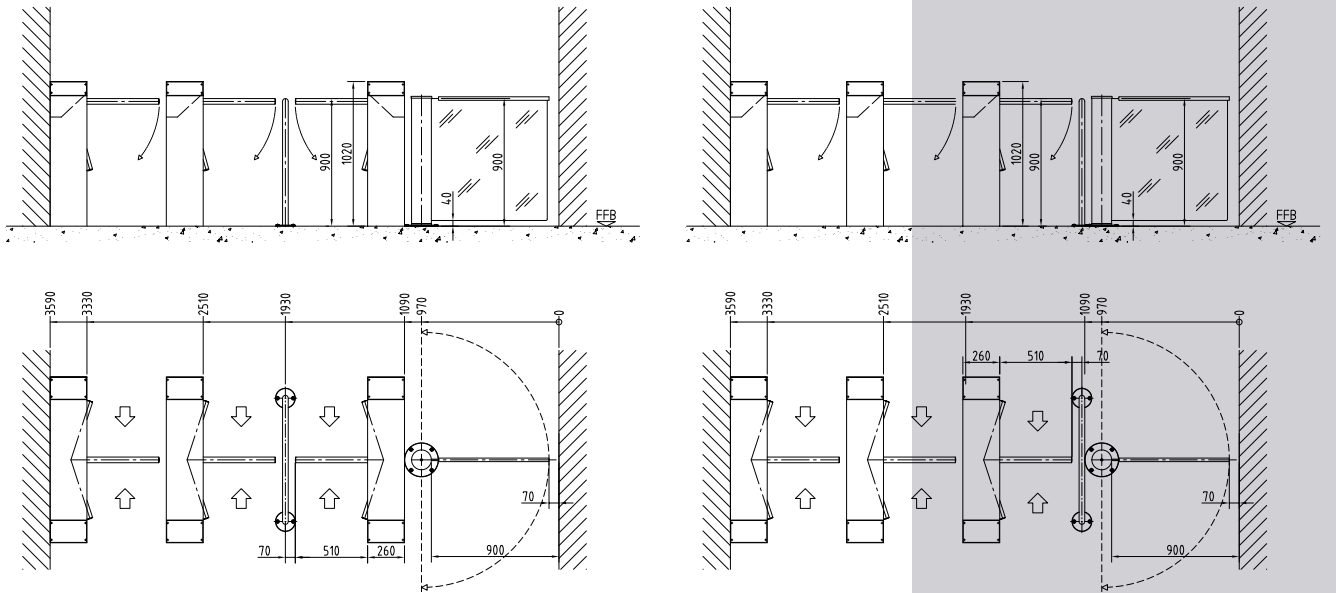


base frame TPB-S03

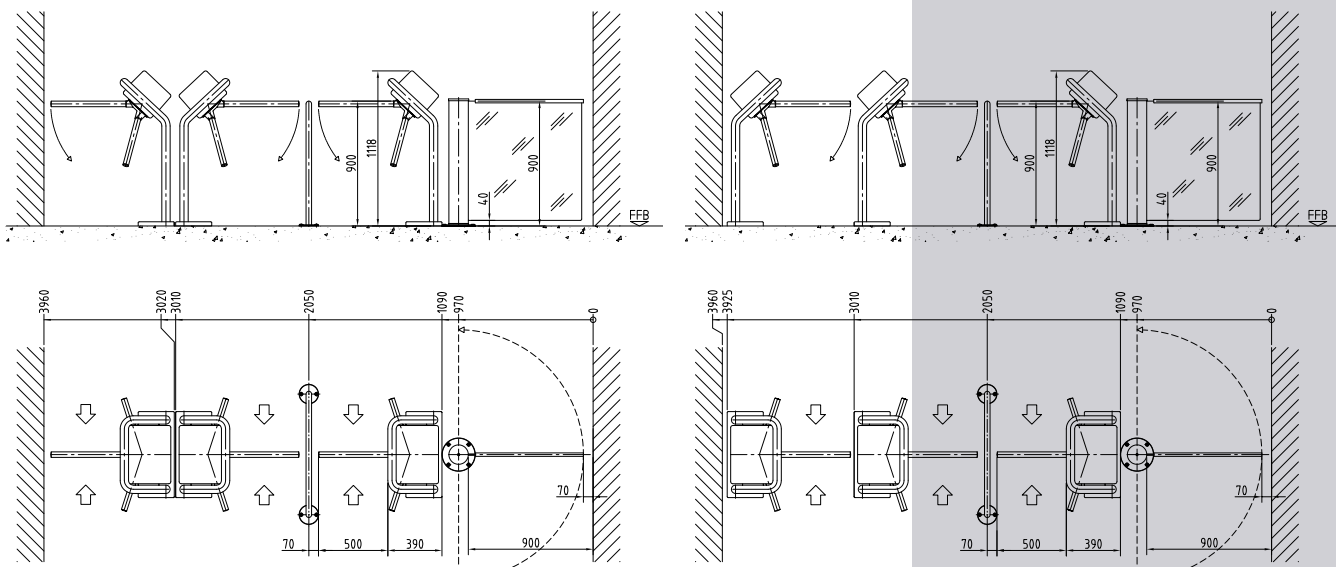


Assembly diagram

for instance TPB-E02 with option "angular base columns"



for instance TPB-S01



The logo for KABA, featuring the word "KABA" in a bold, stylized, sans-serif font. The letters are black with a white outline, and a registered trademark symbol (®) is located to the upper right of the letter "A".

KABA®

Kaba Gallenschütz GmbH
Nikolaus-Otto-Strasse 1
77815 Bühl
Germany
Tel. +49 (0) 7223/286-0
Fax +49 (0) 7223/286-111
info@kgb.kaba.com

www.kaba-gallenschuetz.de